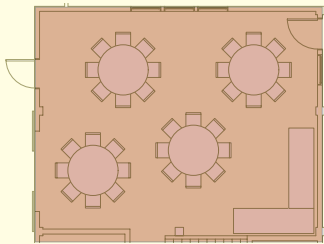
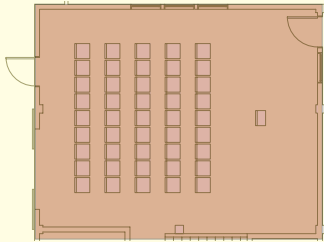


Heyday Farm Function Spaces

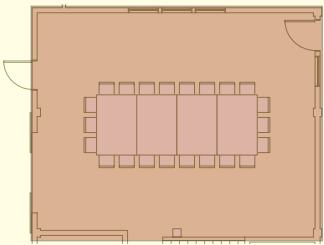
GREAT ROOM - OPTIONS



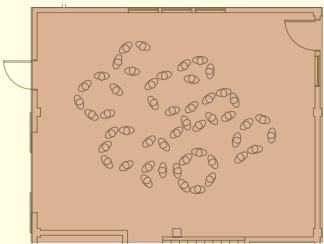
Banquet tables



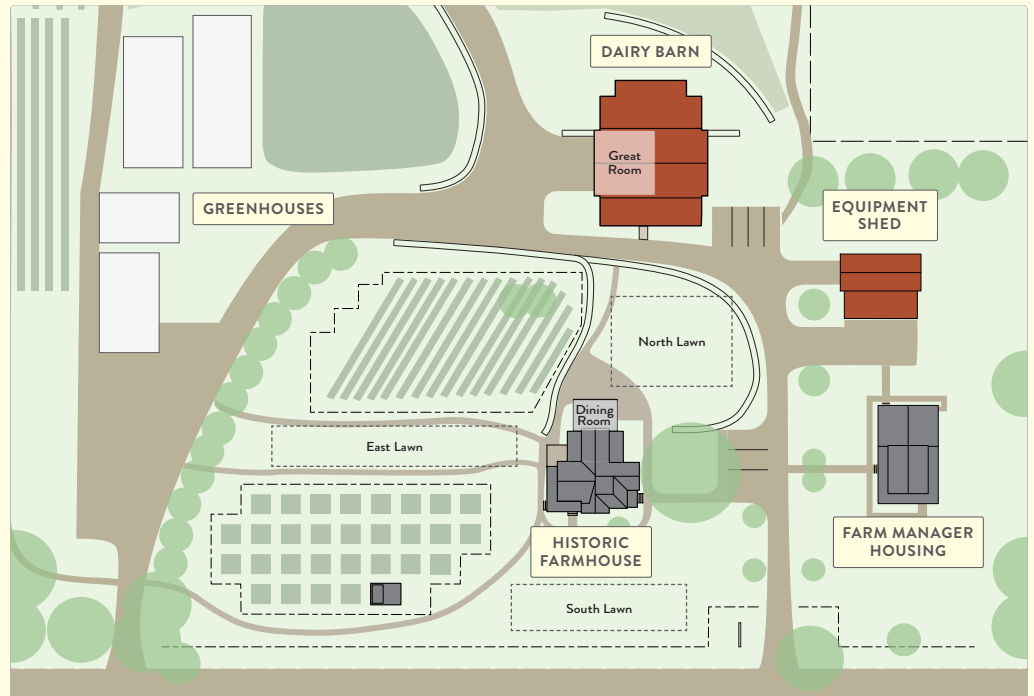
Classroom seating



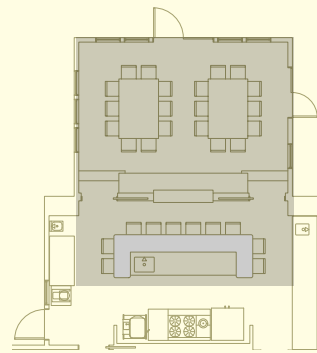
One large table



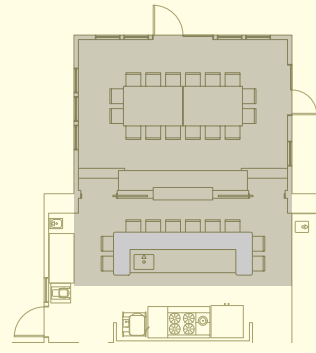
Standing



DINING ROOM - OPTIONS



Two tables - 10 people each table, plus 12 in kitchen view seating.



One large table - 20 people, plus 12 in kitchen view seating.

TENT/CANOPY OPTIONS: Capacity shown is approximate

| Size | Seats |
|--------|-------|
| 20x30 | 60-70 |
| 20x35 | 70-90 |
| 20x50 | 100 |
| 20x100 | 100 |
| 30x45 | 100 |

| Location | Square Footage | Dimensions | Classroom Seating | Seated Banquet | Standing Reception | One large table | Tent/Canopy Size |
|-------------------------|----------------|-------------|-------------------|----------------|--------------------|-----------------|------------------|
| Great Room, Dairy Barn | 600 | 28' x 21.5' | 40-50 | 32-40 | 100 | 36 | - |
| Classroom, Dairy Barn | 238 | 17' x 14' | 20-30 | 20-25 | 40 | 15-20 | - |
| Dining Room, Farmhouse | 315 | 21' x 15' | 20-30 | 20-30 | 40-50 | 20-25 | - |
| North Lawn, Farmhouse | 1485 | 33' x 45' | 80-100 | 80-100 | 100 | 40-45 | 30' x 45' |
| Garden Lawn, Farmhouse | 2400 | 20' x 120' | 80-100 | 80-100 | 100 | 80-100 | 20' x 100' |
| South Lawn, Farmhouse A | 950 | 25' x 38' | 60-100 | 60-70 | 100 | 30-40 | 20' x 30' |
| South Lawn, Farmhouse B | 1296 | 24' x 54' | 80-100 | 80-100 | 80-100 | 40-60 | 20' x 50' |
| Farmhouse Patio | 975 | 25' x 39' | 60-100 | 60-70 | 100 | 30-40 | 20' x 35' |

