

INDUSTRIA

WILLIAMSBURG

WILLIAMSBURG, BROOKLYN

29-39 South 5th Street

33 Grand Street

Founded in 1991, Industria revolutionized the photo and event industry as the first multi-studio complex of its kind in the New York City. Today, in addition to the iconic West Village location, Industria boasts two new outposts in the burgeoning neighborhood of Williamsburg, Brooklyn.

Offering exceptional and versatile facilities, the studios are designed for a variety of events - including private parties, celebrations, weddings, exhibitions, conferences, product launches, and festivals.

Embedded within an incredibly vibrant area, Industria Williamsburg is nestled under the Williamsburg Bridge, the new waterfront Domino Park and is only a subway stop from Manhattan.

Please, visit us!



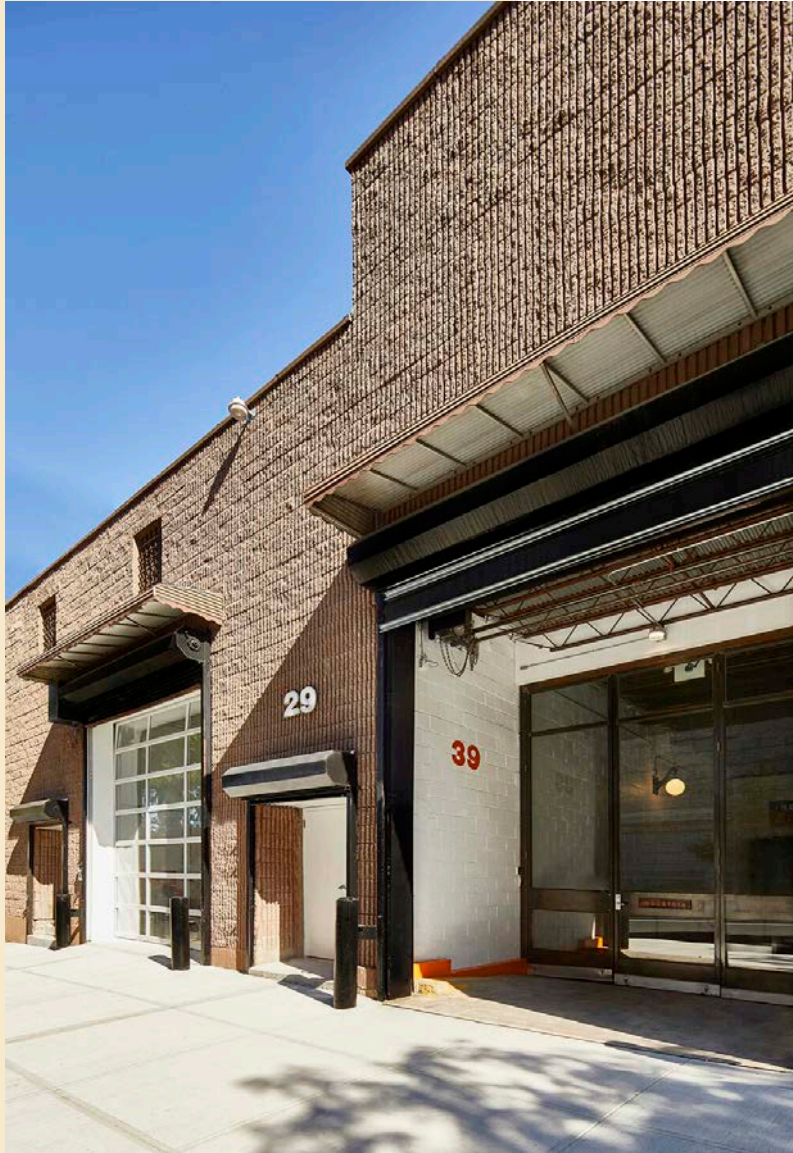
SONOS
THE WIRELESS HiFi SYSTEM



NYCWFF
PRESENTED BY **FOOD&WINE**

Transportation: 5 min. drive from Manhattan, subway lines L,J,M,Z , East River Ferry





South 5th Street, Williamsburg

Beneath the Williamsburg Bridge, a 10,000 sq ft warehouse turned into a stunning event space with exceptionally high ceilings, multiple entrances and mezzanines

The South 5th offers 4 studios, Studio 1 through 4, and a lobby for a total of 10,000 sq ft of space. Clients may rent Studios 1 + 2 , Studios 3 + 4 or the entire building.

Size

10,000 sq ft

Ceiling height

25 ft (rigging capability)

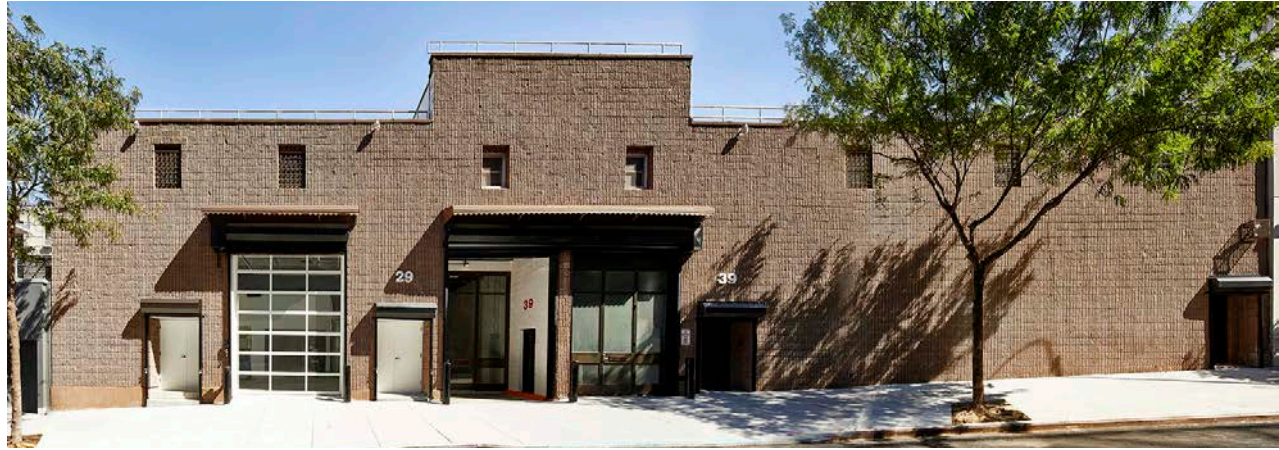
Power

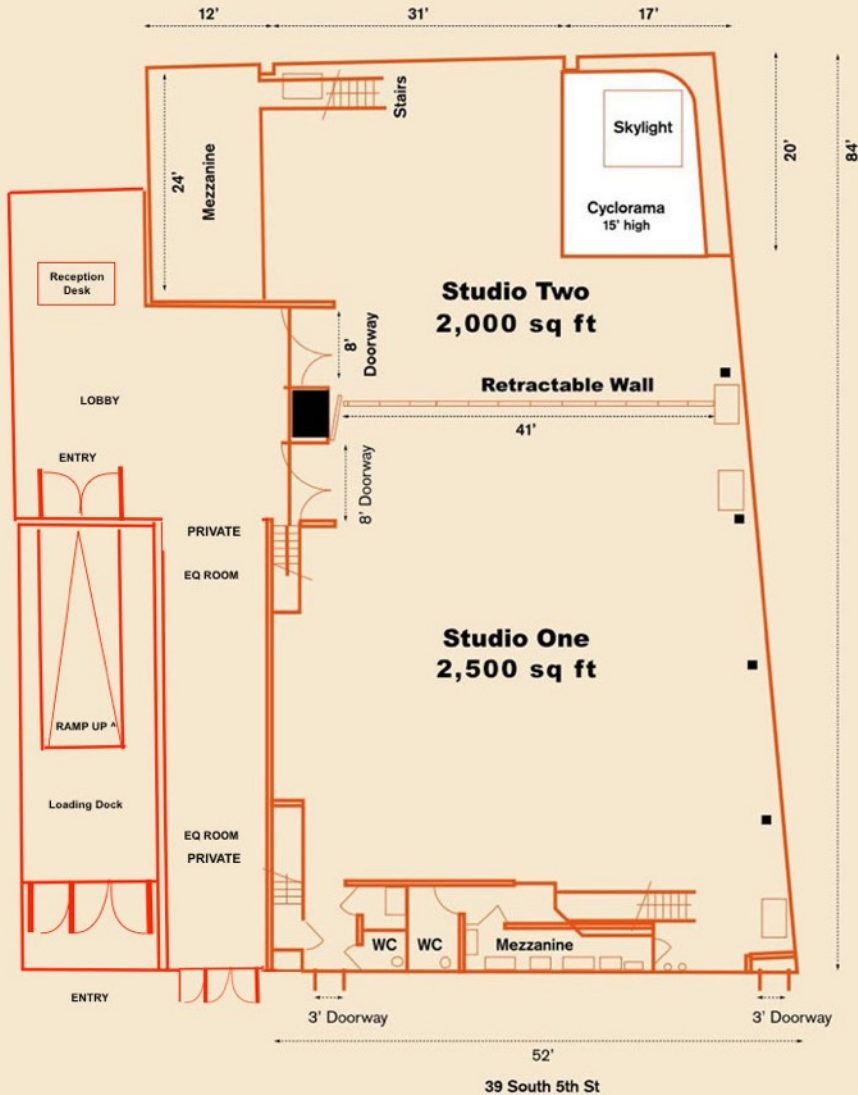
800 amp 3-phase power

Additional notes

Ground level with multiple street access points and drive-in capable photo and event space. Private loading dock. Two cycloramas. Column-free. Retractable walls to partition the space according to client needs.







39 South 5th St

Studios 1+2

Size

4,500 sq ft open, column-free space

Ceiling height

25 ft (rigging capability)

Power

4x 100 amp 3-phase power

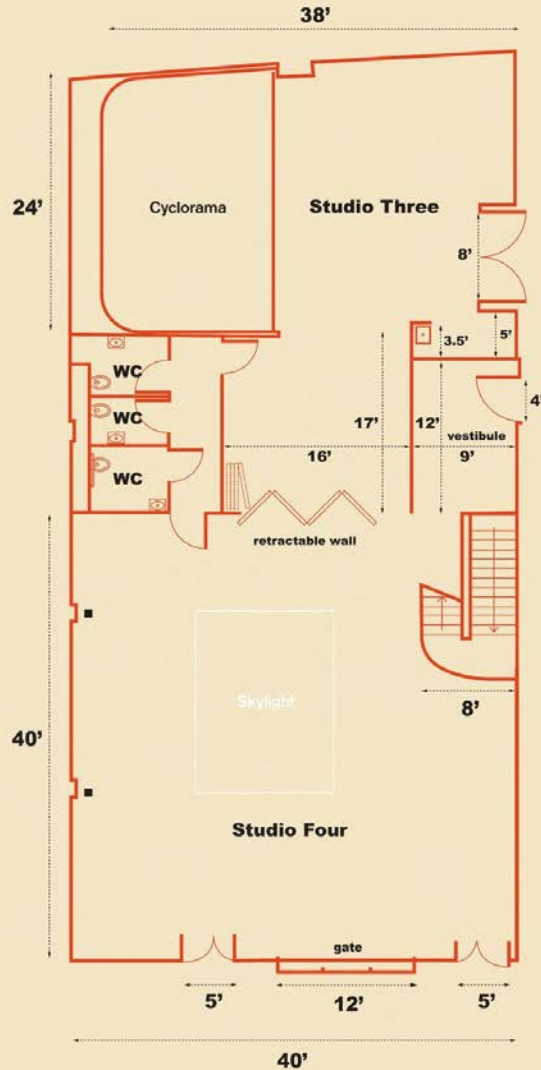
Additional notes

Ground level with street access. Drive-in capable photo and event space. Private loading dock. Two furnished mezzanines. Access to private bathrooms and shower. Column-free. Conference room available. Retractable wall may be used to partition the space.









Studios 3+4

Size

Studio 3 - 1500 sq ft

Studio 4 - 2000 sq ft + 600 sq ft furnished mezzanine

Combined - 3500 sq ft + mezzanine

Ceiling height

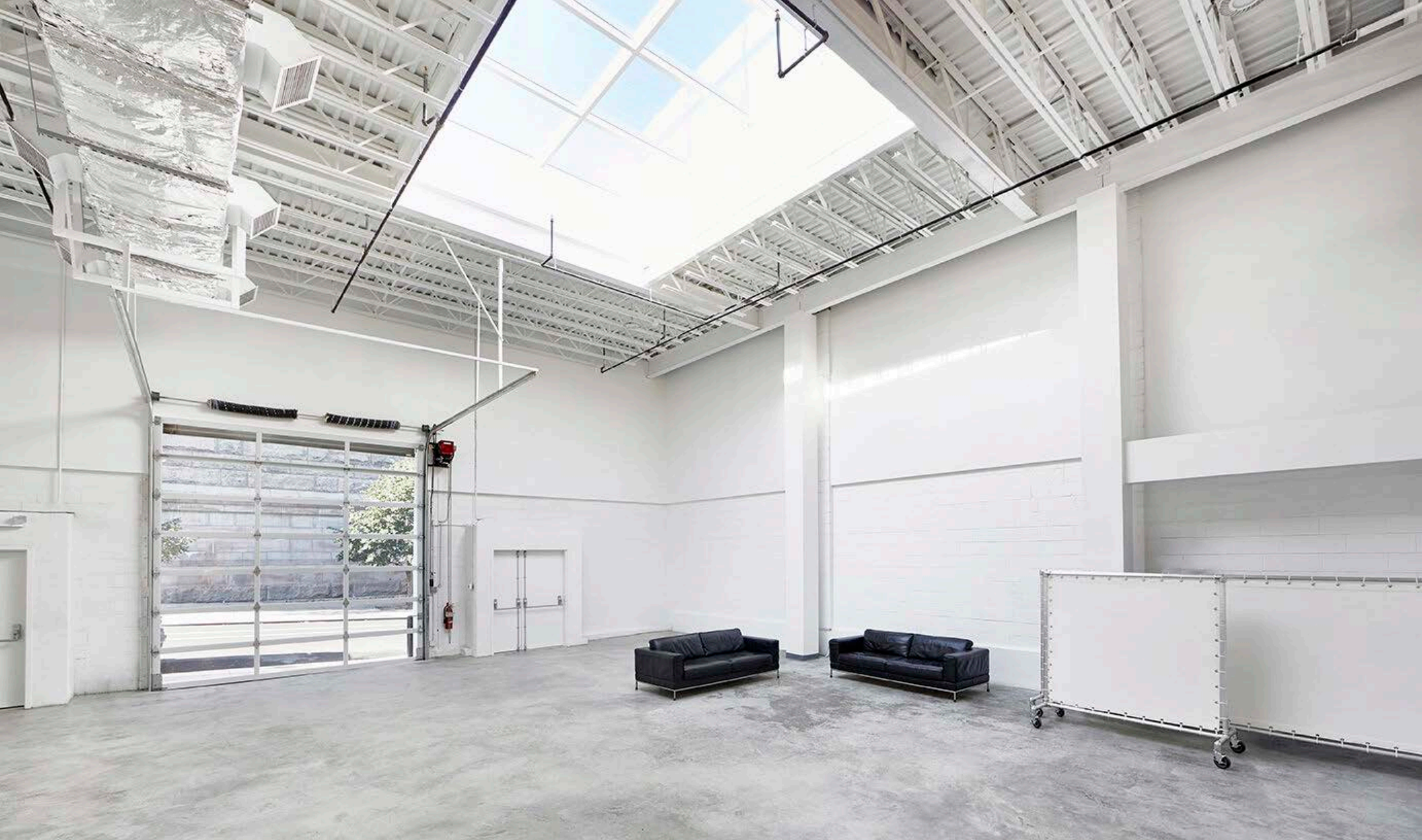
25 ft (rigging capability)

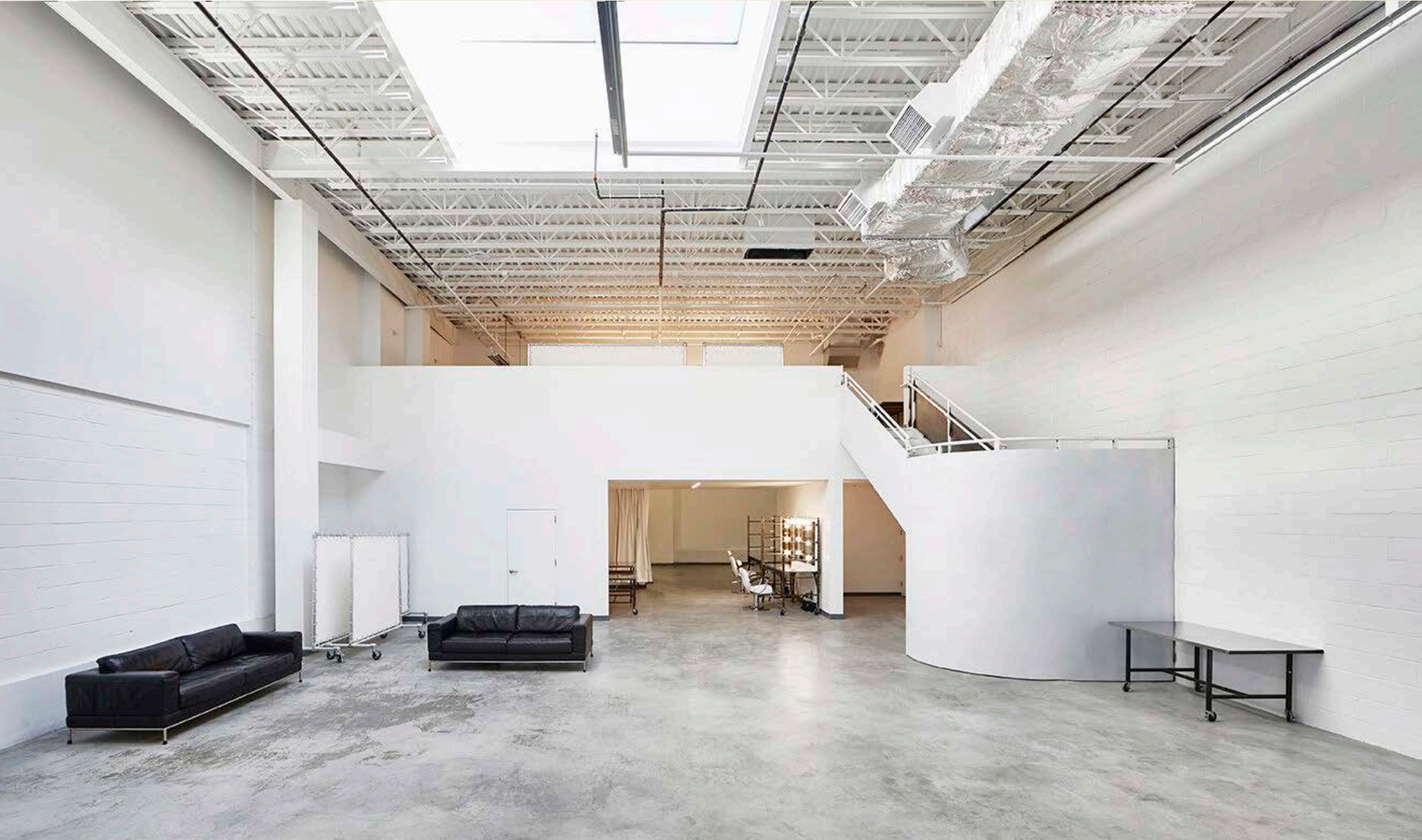
Power

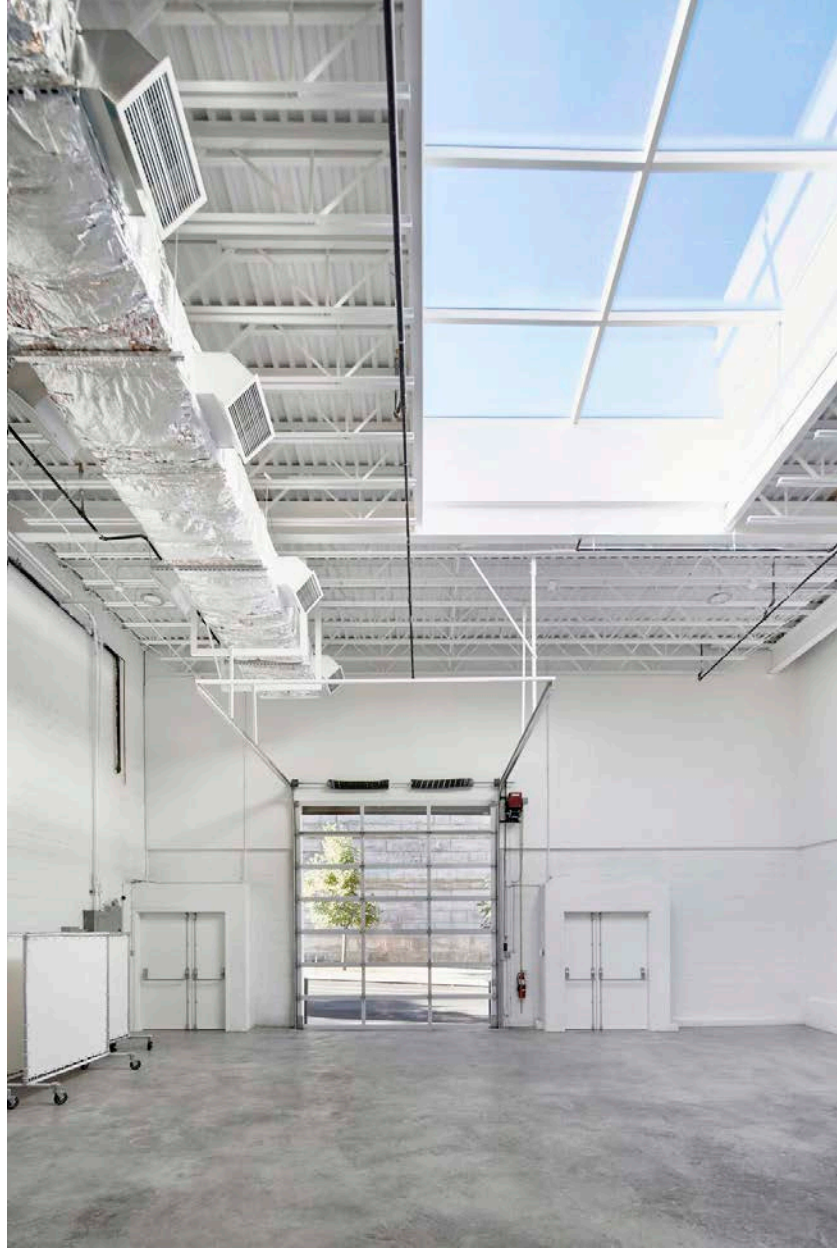
4x 100 amp 3-phase power

Additional notes

Column-less. Huge skylight with black-out capability in Studio 4. Private ground floor building with direct street access and private entrances. Drive-in capable. Retractable wall.











33 Grand St Brooklyn

**Historical building in the heart of
Williamsburg, Brooklyn**

**Modern space with exposed brick detail and
floor to ceiling windows**

Size

2,000 sq ft plus 1,000 sq ft basement, 400 sq ft courtyard

Ceiling height

18 ft

Light

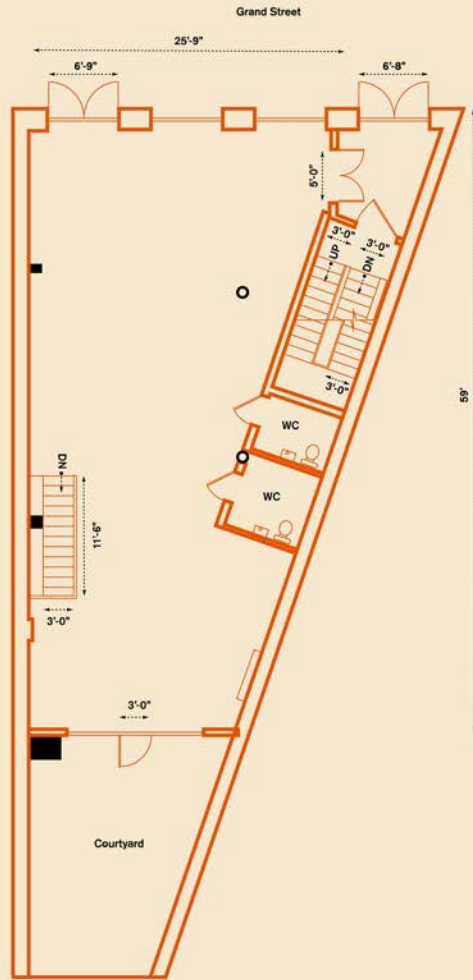
Floor to ceiling windows

Power

100 amp 3-phase power

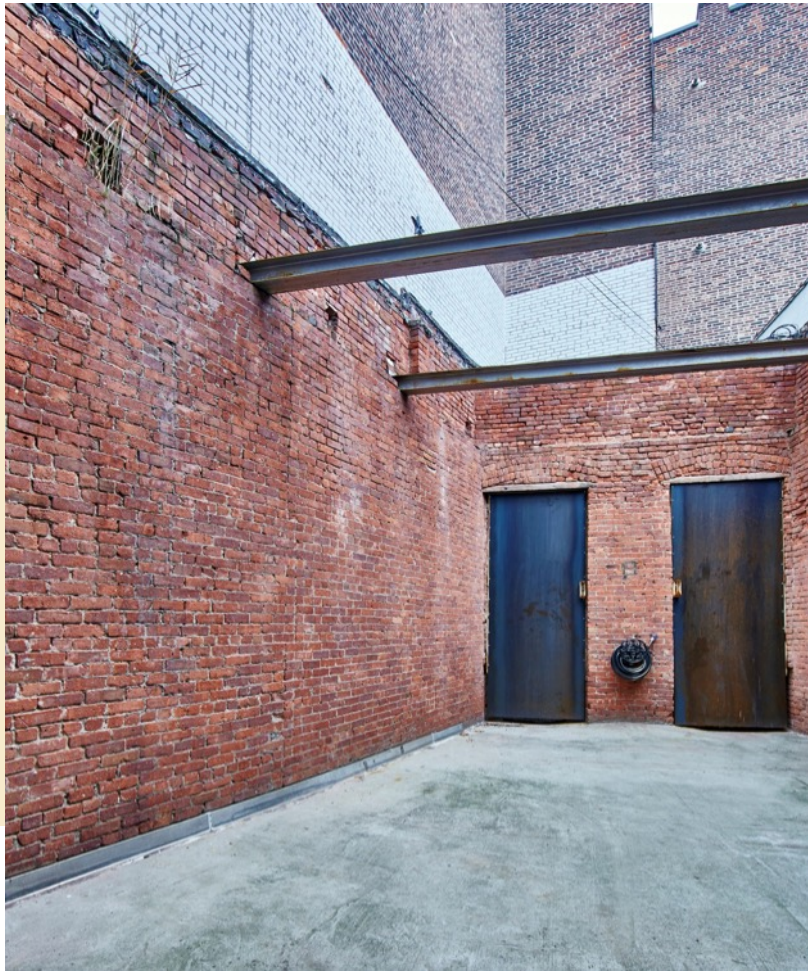
Additional notes

Ground level access, 2 restrooms in studio, private
basement for back of house, private courtyard









EVENTS GALLERY

39 South 5th Street
33 Grand Street



SONOS
THE WIRELESS HiFi SYSTEM



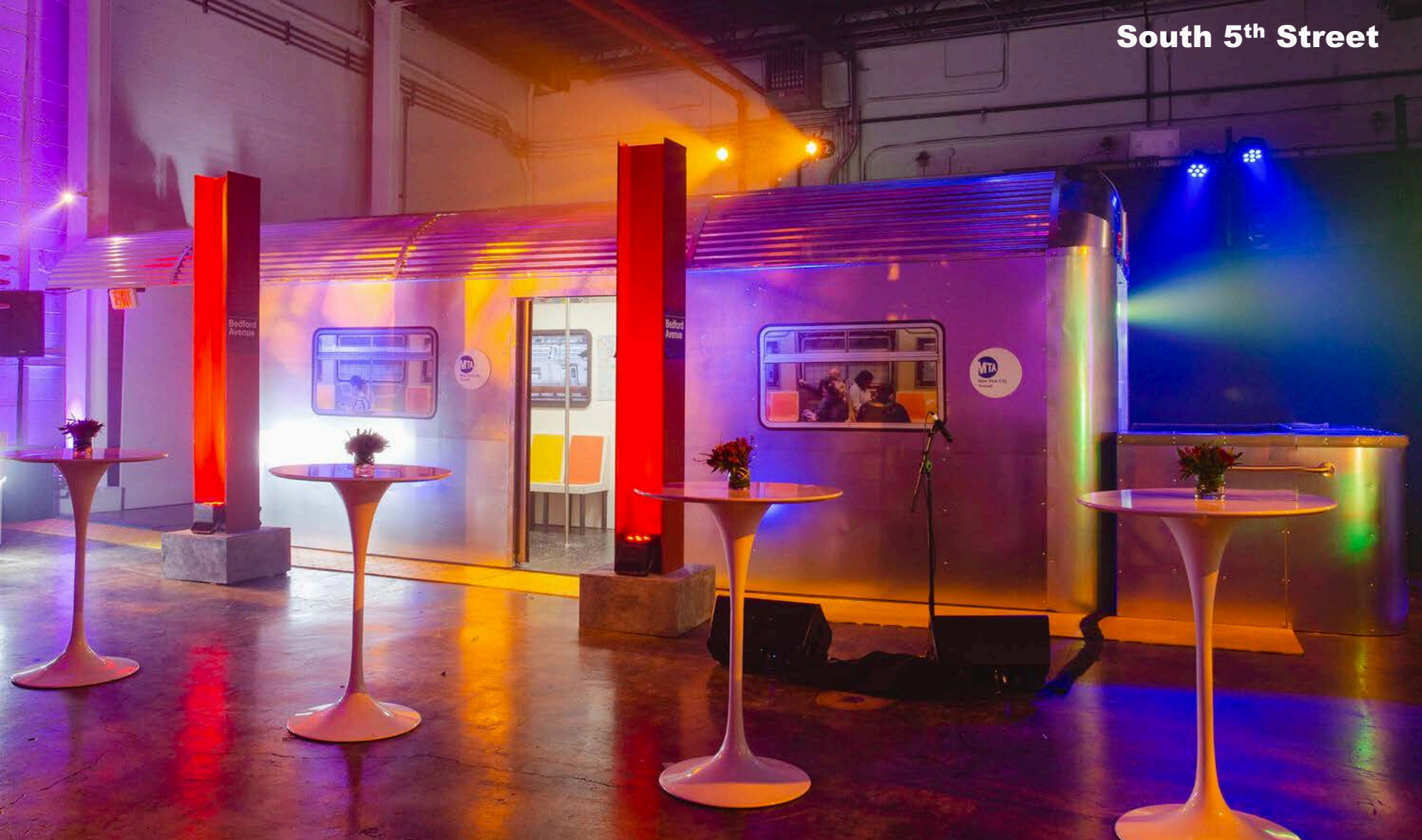
NYCWFF
PRESENTED BY FOOD&WINE

South 5th Street



South 5th Street





South 5th Street









South 5th Street



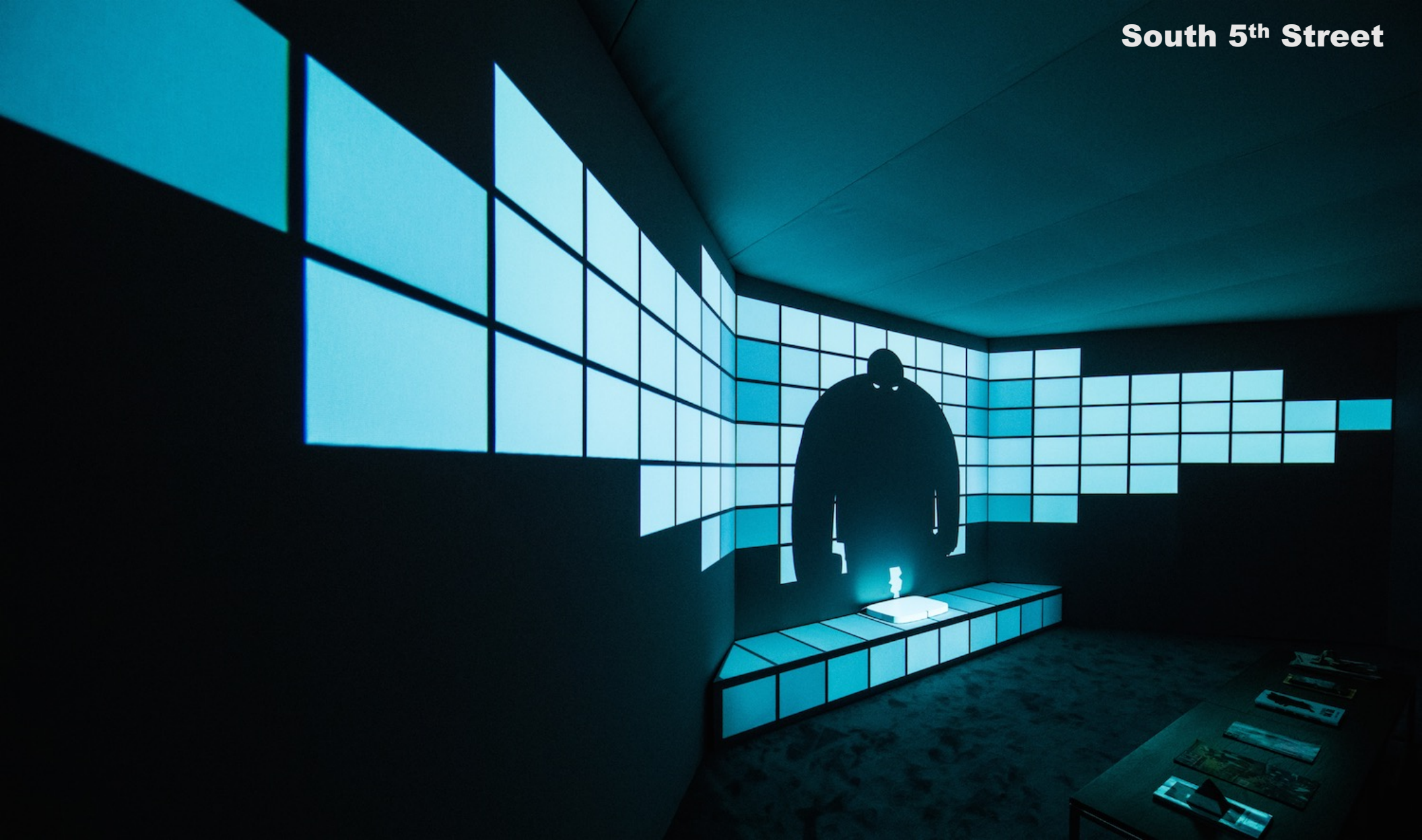
ON AIR

1
CONCEPT DEVELOPMENT





South 5th Street



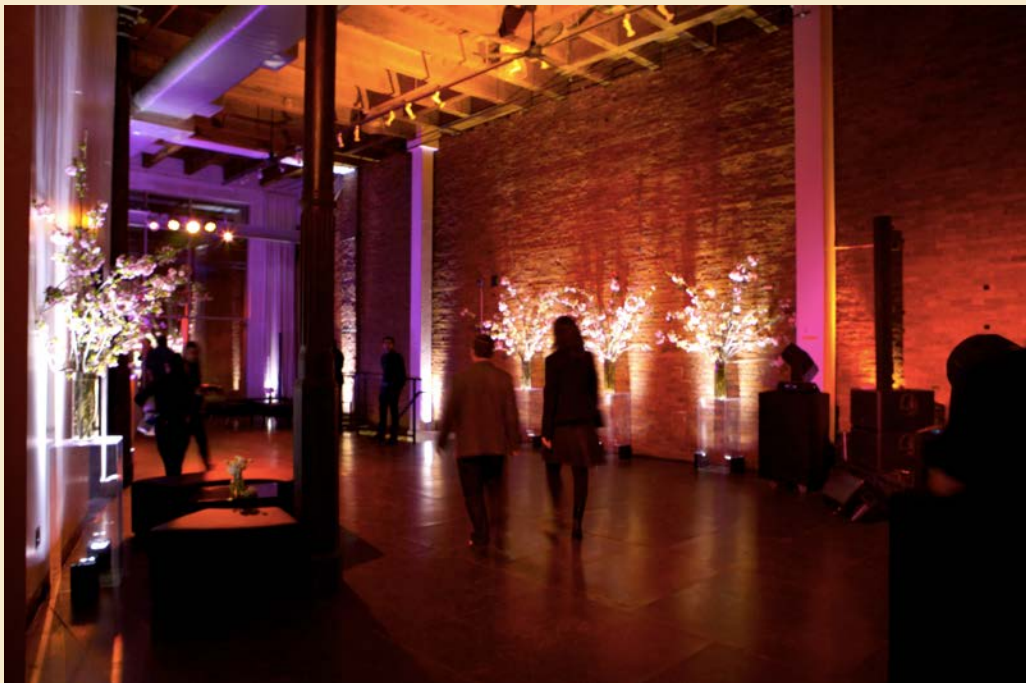




33 Grand Street



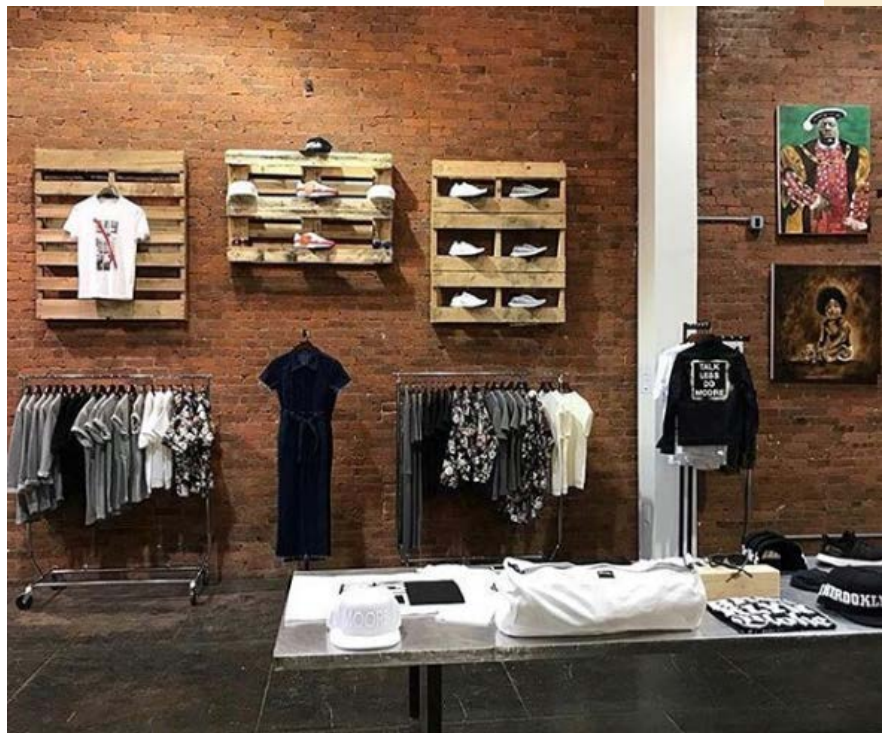
33 Grand Street



33 Grand Street

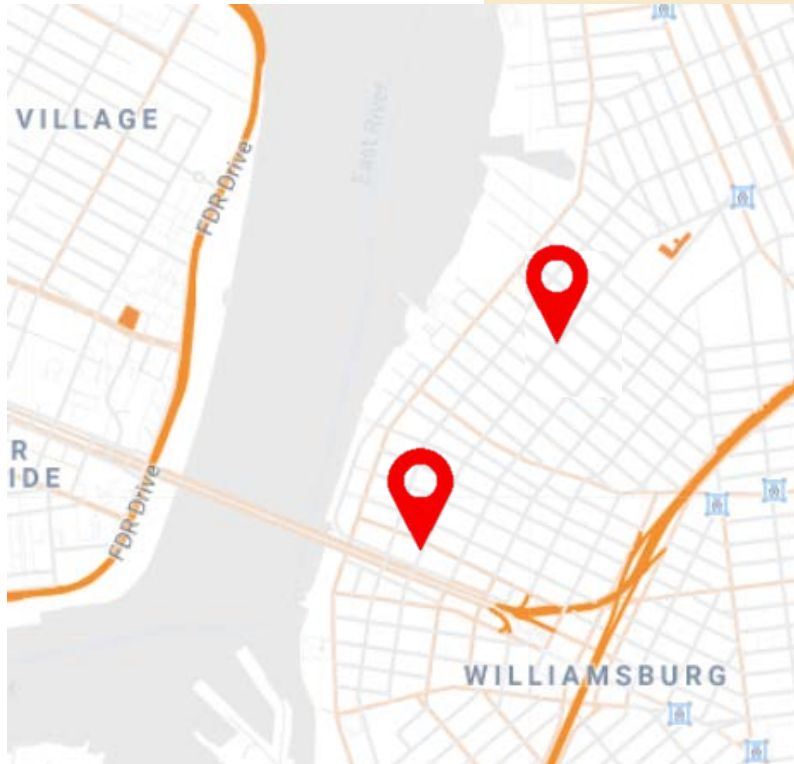


33 Grand Street





33 Grand Street



THANK YOU

CONTACT:

212.366.1114 ext:2

events@industrianyc.com

www.industrianyc.com

Subway: L at Bedford Ave, J M Z at Marcy Ave

East River Ferry, South Williamsburg

5-minute drive from Manhattan